

📍 Manufactured & Marketed By:
PRINCIPAL PIPES PVT. LTD.

☎ +91 92448 09099

✉ contact@principalpipes.com

🌐 www.principalpipes.com

📍 Manufacturing Address: **Ahmedabad, Gujrat**





USCERT
US CERTIFICATION & INSPECTION LIMITED

Company Number-13917497

Certificate of Registration

This is to certify that

Principal Pipes Pvt Ltd

at

**DK 2/412/28, DANISH KUNJ, KOLAR ROAD, BHOPAL
HUZUR, MADHYA PRADESH 462042**

Has been independently assessed and is compliant with requirement of:

ISO 9001:2015
(Quality Management System)

For the following Scope of Activities:

Manufacture, Stockist and Supplier of C-PVC Pipes and Fittings for Hot and Cold Water Supply Application.

Manufacture, Stockist and Supplier of U-PVC Pipes and Fittings for Plumbing, Agriculture, Soil, Waste and Rainwater Supply Application. Manufacture, Stockist and Supplier of Hardware Components, Bathroom and Chrome - Plated (CP) Fittings for Plumbing Manufacture, Stockist and Supplier of Sanitary and Ceramic Products and Fittings

Certificate Number: QM-19682

Validity of this certificate can be verified at www.uscertifications.co.uk.

Date of Certification:

29th Aug. 2025

1st Surveillance Audit Due:

28th Aug. 2026

2nd Surveillance Audit Due:

28th Aug. 2027

Certificate expiry: (Subject to the Company

28th Aug. 2028

Maintaining its system as per the required standard)

Authorised Signatory



This certificate is the property of US Certification & Inspection Limited and shall be returned immediately on request,

Address: 2nd Floor, College House, 17 King Edwards Road, Ruislip, London, United Kingdom, HA4 7AE (U K)

E mail ID: info@uscertification.co.uk , web site: www.uscertifications.co.uk



SWR
DRAINAGE SYSTEM

BEST SOLUTION FOR

DRAINAGE

SYSTEM



LEAKPROOF



BEND 87.5°			
INCH	MM	BOX	RATE
2.1/2"	75	80	111
4"	110	30	205



DOOR BEND 87.5°			
INCH	MM	BOX	RATE
2.1/2"	75	65	142
4"	110	25	258



SINGLE TEE			
INCH	MM	BOX	RATE
2.1/2"	75	45	168
4"	110	18	287



DOOR SINGLE TEE			
INCH	MM	BOX	RATE
2.1/2"	75	40	198
4"	110	12	354



SHOE BEND 45°			
INCH	MM	BOX	RATE
2.1/2"	75	90	107
4"	110		172



COUPLER			
INCH	MM	BOX	RATE
2.1/2"	75	130	86
4"	110	45	140



SINGLE Y			
INCH	MM	BOX	RATE
2.1/2"	75	37	185
4"	110	14	358



DOOR SINGLE Y			
INCH	MM	BOX	RATE
2.1/2"	75	14	
4"	110		



REDUCER TEE			
INCH	MM	BOX	RATE
4"X2.1/2"	110X75	17	300



DOOR REDUCER TEE			
INCH	MM	BOX	RATE
4"X2.1/2"	110X75	17	
6"X4"	160X110		



CLEANSING PIPE			
INCH	MM	BOX	RATE
2.1/2"	75	65	135
4"	110	22	244



DOUBLE TEE			
INCH	MM	BOX	RATE
2.1/2"	75	65	242
4"	110	22	385



REDUCER SOCKET			
INCH	MM	BOX	RATE
4"X2.1/2"	110X75	65	118



VENT COWL			
INCH	MM	BOX	RATE
2.1/2"	75		
4"	110		



P - TRAP			
INCH	MM	BOX	RATE
4"X4"	110X110		
4.1/2"X4"	125X110		



Q-TRAP			
INCH	MM	BOX	RATE
4"X4"	110X110		
4.1/2"X4"	125X110		



S-TRAP			
INCH	MM	BOX	RATE
4"X4"	110X110		
4.1/2"X4"	125X110		



SOCKET PLUG			
INCH	MM	BOX	RATE
2.1/2"	75		
4"	110		



MULTI FLOOR TRAP (4" HEIGHT)			
INCH	MM	BOX	RATE
4"X2.1/2"	110X75	34	



ROUND JALI			
INCH	MM	BOX	RATE
4"	110		



NAHANI TRAP (ONE PIECE)			
INCH	MM	BOX	RATE
4"X2.1/2"	110X75	46	
4"X4"	110X110	33	



RUBBER RING			
INCH	MM	BOX	RATE
2.1/2"	75	100	
3"	90	100	
4"	110	100	
6"	160	50	



REDUCER BUSH			
INCH	MM	BOX	RATE
4"X2.1/2"	110X75		



DOOR CAP			
INCH	MM	BOX	RATE
2.1/2"	75		
4"	110		



PIPE CLIP			
INCH	MM	BOX	RATE
2.1/2"	75		
4"	110		
6"	160		



BACK FLOW VALVE			
INCH	MM	BOX	RATE
2"	63	120	
2.1/2"	75	105	
3"	90	42	
4"	110	75	
5"	140	28	
6"	160	28	

uPVC SWR Drainage System

AGRICULTURE SYSTEM

Agriculture & Water
Distribution System



EASY
MAINTENANCE



LIGHT WEIGHT



STRONG &
DURABLE



COST
EFFECTIVE



CHEMICAL
RESISTANT



UV RESISTANT



LEAK PROOF
JOINTS



SMOOTH
SURFACE

Sizes Available: 40 mm to 160 mm

INCH	MM	LENGTH	2.5 KG/CM2	4 KG/CM2	6 KG/CM2	10 KG/CM2
1/2"*	20	20 FT	-	-	-	-
3/4"*	25	20 FT	-	-	-	-
1"*	32	20 FT	-	-	-	-
1.1/4"	40	20 FT	-	-	-	-
1.1/2"	50	20 FT	-	-	-	-
2"	63	20 FT	-	-	-	-
2.1/2"	75	20 FT	-	-	-	-
3"	90	20 FT	-	-	-	-
4"	110	20 FT	-	-	-	-
5"	140	20 FT	-	-	-	-
6"	160	20 FT	-	-	-	-
7"	180	20 FT	-	-	-	-
8"	200	20 FT	-	-	-	-

NOTE- (*) PRODUCTS ARE AS PER ISI





HSN CODE 39172390 SWR RING FIT PIPES AS PER IS 13592

SINGLE SOCKET TYPE-A

INCH	MM	LENGTH-FT	LENGTH-MTR	RATE PER PCS
2.1/2"	75	10 FT	3 - MTR	745
4"	110	10 FT	3 - MTR	1260

HSN CODE 39172M

CPVC PLUMBING PIPES AS PER ASTM D 2846, IS 15778 (2007) (RATE PER METER)

CPVC PIPES SDR-11 (CLASS 1)

INCH	MM	3-MTR	5-MTR	RATE
1/2"	15	100	90	
3/4"	20	55	50	
1"	25	40	35	
1.1/4"	32	25	20	
1.1/2"	40	15	15	
2"	50	10	10	

CPVC PIPES SDR-13.5 (CLASS 2)

INCH	MM	3-MTR	5-MTR	RATE
1/2"	15	100	90	
3/4"	20	55	50	
1"	25	40	35	
1.1/4"	32	25	20	
1.1/2"	40	15	15	
2"	50	10	10	

CPVC PIPES SCH-80 AS PER ASTM F 441

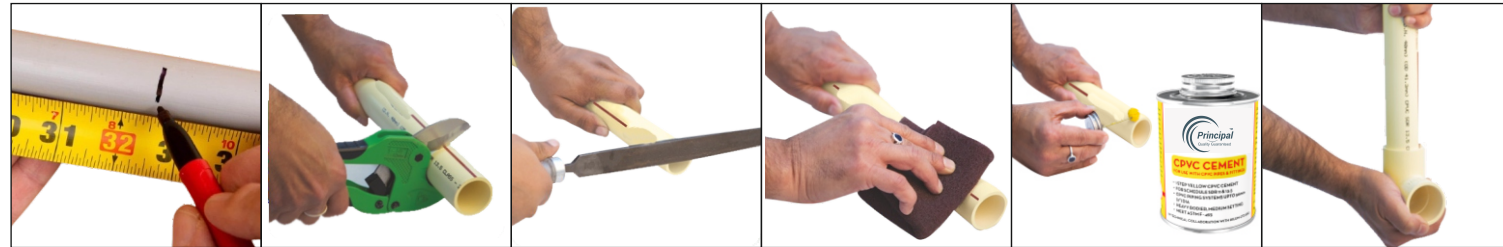
INCH	MM	3-MTR	5-MTR	RATE
2.1/2"	65	4	4	
3"	80	3	3	
4"	100	2	2	

CPVC PIPES SCH-40 AS PER ASTM F 441

INCH	MM	3-MTR	5-MTR	RATE
2.1/2"	65	4	4	
3"	80	3	3	
4"	100	2	2	



CPVC How To Conceals And Joint



MEASURING

We should measure the length of the pipe in an accurate manner and make a marking using the pen to make a required and neat joint. Make sure that the pipe and fittings are adaptable.

CUTTING

1. Cut the pipe with a sharp saw/cutter as squarely as possible (at 90°) which provides optimal bonding area within a joint.
2. Check and inspect pipe ends thoroughly before making a joint.
3. If you see a crack then cut off a minimum of 25mm beyond the noticed crack before proceeding.

DEBURRING/ BEVELING

1. If there are burrs in and on the end of the fittings during the assembly then it can obstruct the proper contact between the pipe and socket.
2. The burrs should be removed from both in and outside of the pipe.
3. A slight bevel on the pipe's end will make it easier to insert the pipe into the fitting socket.

FITTING PREPARATION

1. Wipe the dirt and moisture from the fittings, sockets, and pipe by using a clean dry cloth.
2. Dry fit the pipe to ensure a complete entrance into the bottom of the fitting socket and create a visible marking with a dark marker.

SOLVENT CEMENT APPLICATION

1. You can use solvent cement for the perfect solvent weld joint.
2. Apply an even coat of cement on the end of the pipe and also inside the fitting socket while making a joint.
3. The solvent should have a flowing consistency like syrup. Avoid lumpy or thickened solvent cement.

ASSEMBLY

1. Insert a pipe into a socket just after applying solvent cement.
2. Rotate the pipe 1/2 or 1/4 while inserting. Maintain even distribution of cement within the joint during motion or rotation.
3. Align the fittings properly and leave it for 10-20 seconds to make the joint set-up.



HSN CODE 39172390

UPVC PLUMBING PIPES AS PER ASTM D 1785

UPVC PIPES (SCH - 40)

INCH	MM	3-MTR	5-MTR	RATE
1/2"	15	50	25	
3/4"	20	40	20	
1"	25	25	15	
1.1/4"	32	15	10	
1.1/2"	40	12	8	
2"	50	8	6	

UPVC PIPES (SCH - 40)

INCH	MM	3-MTR	5-MTR	RATE
2.1/2"	65	4	4	
3"	80	3	3	
4"	100	2	2	

UPVC PIPES (SCH - 80)

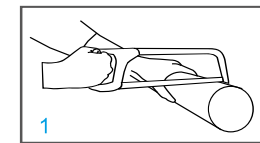
INCH	MM	3-MTR	5-MTR	RATE
1/2"	15	50	25	
3/4"	20	40	20	
1"	25	25	15	
1.1/4"	32	15	10	
1.1/2"	40	12	8	
2"	50	8	6	

UPVC PIPES (SCH - 80)

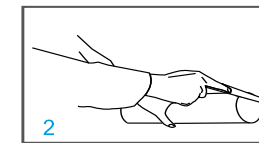
INCH	MM	3-MTR	5-MTR	RATE
2.1/2"	65	4	4	
3"	80	3	3	
4"	100	2	2	

Installation Procedures :

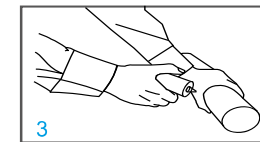
Rubber Ring Joints :



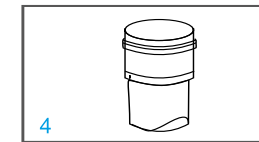
1. Cut pipe square to the required length.



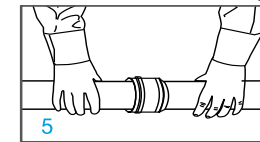
2. Chamfer the edge of the pipe. Remove all burrs, dust and dirt.



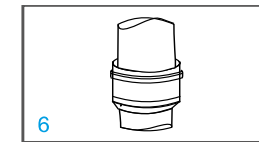
3. Apply lubricant on the external surface of the pipe and on the elastomeric ring.



4. Make sure the sealing ring is placed correctly in the groove.

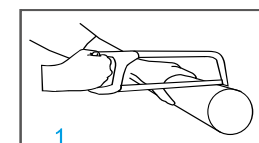


5. Push the pipe into the socket.

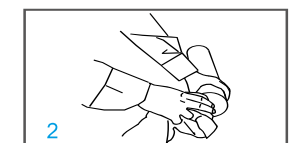


6. Ensure 10 mm gap between the pipe end and the socket register for thermal expansion and contraction.

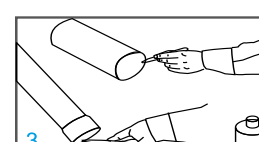
Solvent Welded Joint :



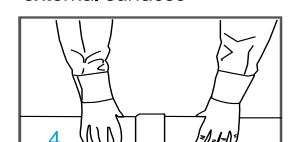
1. Cut pipe square to the required length.



2. Remove all burrs & grease if any, from the internal & external surfaces



3. Apply solvent cement uniformly on the inner surface of fitting and outer surface of pipe



4. Insert the pipe end into socket end & push it fully in. Turn around pipe for 45°, wait for curing time.

